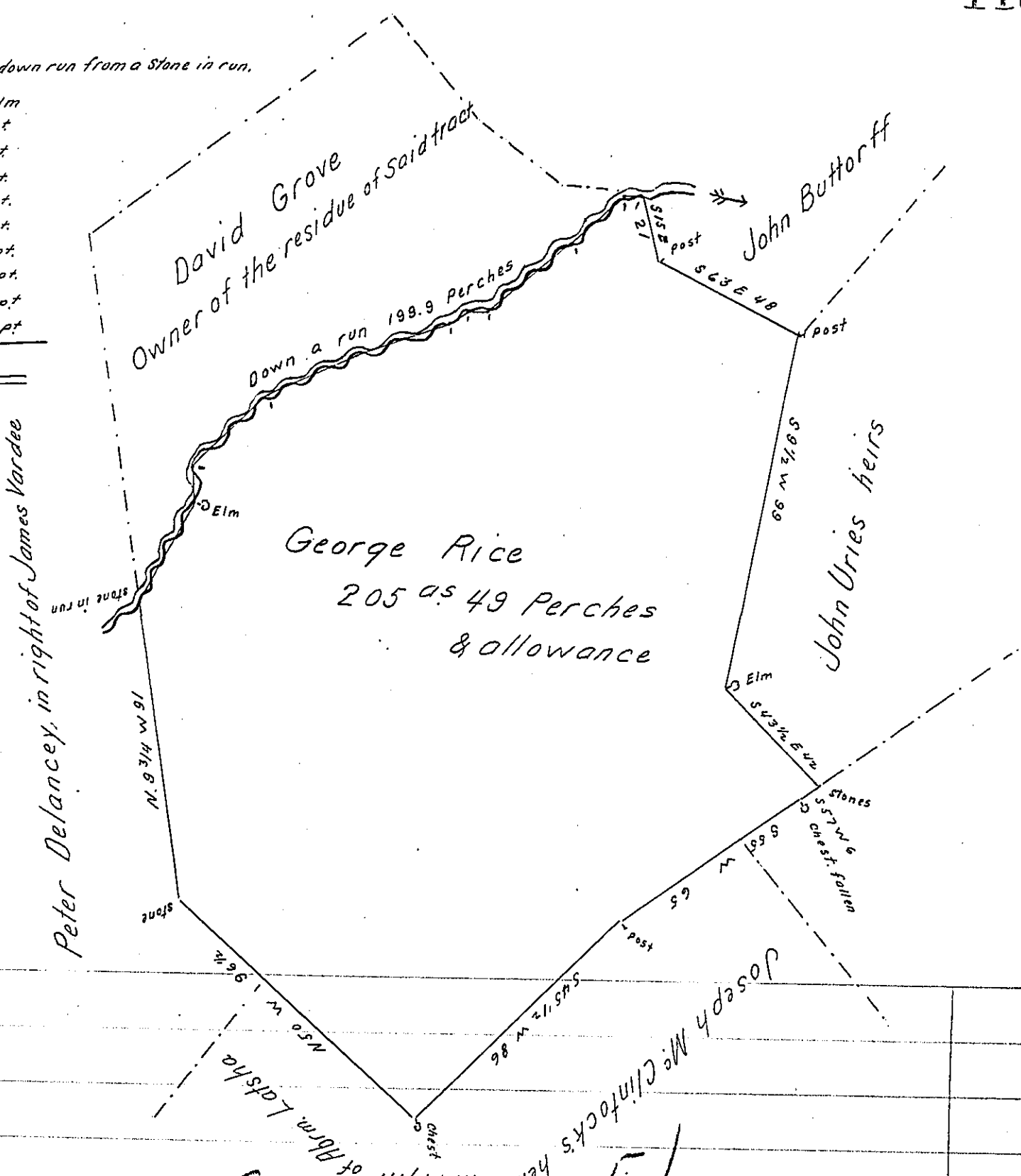


Courses & Distances down run from a Stone in run.

N. 28. E. 33 1/2	Elm
N. 1/2. E. 8 1/2	pt
N. 44 1/2 E 3 1/2	pt
N. 55 3/4 E 2.9	pt
N. 71 1/4 E 28.9	pt
N. 59 1/2 E 7.	pt
N. 81 1/2 E. 1.	pt
N. 55 E 33 1/2	pt
N. 49 1/2 E 22.	pt
N. 80 1/2 E 5.	pt
Perches	199.9



C-124-151

Draft of a tract of land Situate in Madison Township, Perry County  
 Containing Two hundred and Five Acres, Forty nine perches & allowance of Six  
 per Cent for roads &c. Part of 266 as 20 pr. Originally Surveyed on a  
 warrant granted Jacob Grove dated June 10<sup>th</sup> 1762. The above  
 Part Surveyed March the 19<sup>th</sup> 1842 for George Rice the Owner to  
 patent.

Jacob Sallade Esq }  
 Surveyor General of Pa. } pr. W<sup>m</sup> Wilson D.S.

IN TESTIMONY that the above is a copy of the original remaining on file in  
 the Department of Internal Affairs of Pennsylvania, made  
 conformably to an Act of Assembly approved the 16th day of  
 February, 1833, I have hereunto set my Hand and caused  
 the Seal of said Department to be affixed at Harrisburg,  
 this seventeenth day of January 1905.

*Lucas B. Brown*  
 Secretary of Internal Affairs.